

# MAITRIA HOTEL

RAMA 9 · BANGKOK  
A CHATRIUM COLLECTION



## STAY SAVVY IN SMART COMFORT

### MAITRIA HOTEL RAMA 9 BANGKOK - A CHATRIUM COLLECTION

is designed to support and energize the savvy traveller. We're the smart neighborhood brand with the in-sync lifestyle attitude. Set steps from Bangkok's business district hotspot, renowned hospitals, international schools and shopping with local vibes, we are all about modern living comfort. Let us be your travel companion and base hub for your next Bangkok adventure.

The Rama 9 district is the new Central Business District and the metropolis of Bangkok's future. Maitria Hotel Rama 9 Bangkok offers 16 floors with 209 rooms with a range of room types from Studio king or twin, Triple bed and connecting room.

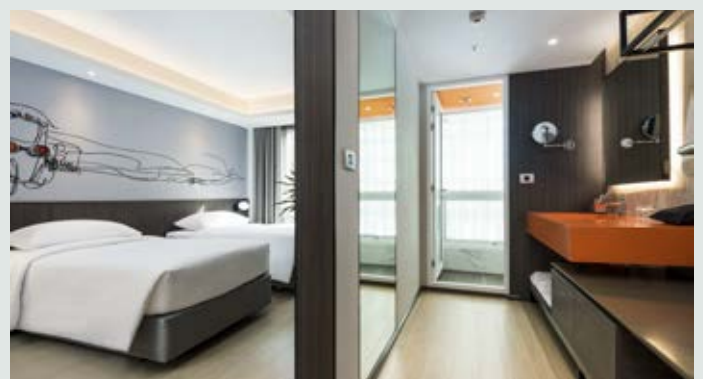
#### Rooms (35 Sq.m.)

Standard	Grand Deluxe
Standard Family Triple	Grand Deluxe Family Triple
Superior	Premiere
Superior Family Triple	Premiere Family Triple
Deluxe	Premiere Grand
Deluxe Family Triple	Premiere Grand Family Triple



#### SAVVY COMFORT:

- Once-only complimentary free minibar
- Choice of king, twin or triple beds
- Bathroom with shower
- Living area
- Flexible workspace
- Interactive IPTV with a large range of International Satellite Channels
- Individually controlled air-conditioning
- Electronic in-room safe
- Coffee and tea making facilities
- Complimentary bottled water
- Eco-friendly amenities



#### CONVENIENCE CRAFTED:

- Complimentary WiFi and wired internet connection
- Iron and ironing board on request
- IDD telephone system
- Proximity-activated key cards
- Dry cleaning and laundry service
- Universal electrical outlets
- Wheelchair access



## FITNESS CENTRE

The Fitness Center allows our guests to keep up with their fitness routine while staying with us. Located at Maitria Residence's lobby level, which is just a few minutes' walk from the hotel, our facility is yours to enjoy with your guest room key and features high-tech equipment and weights to get your heart pumping. Opening Hours: 6.00 am – 10.00 pm.

## OUTDOOR SWIMMING POOL

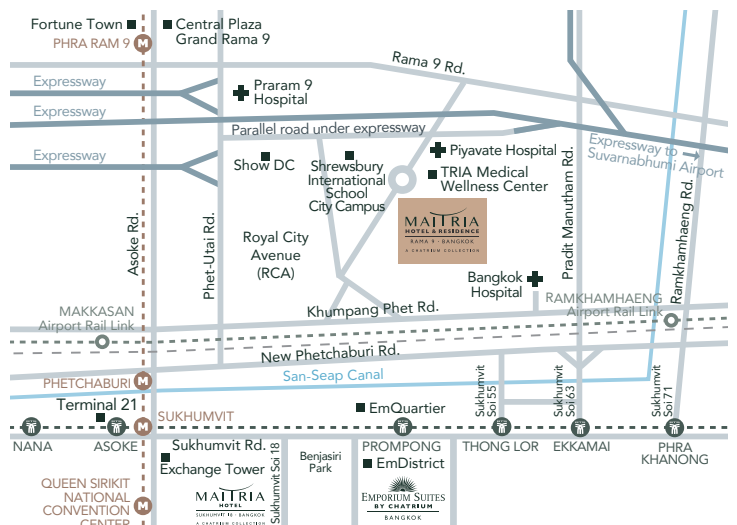
The outdoor swimming pool with Jacuzzi is located in front of the Maitria Hotel's building. This outdoor pool is perfect for a relaxing swim, basking in the sun or a refreshing early morning or late evening dip. Opening Hours: 6.00 am – 8.00 pm.

## LOCATION:

- 2-minute walk to minimart and 24-hour convenience store
- 5-minute walk to the Shrewsbury International School Bangkok City Campus
- 6-minute walk (350 m) to Piyavate Hospital
- 13-minute walk (1.1 km) to ShowDC, Thailand's First Entertainment & Retail Mega Complex
- 15-minute walk (1.2 km) to Royal City Avenue (RCA), the epicenter of Bangkok's club and nightlife zone.
- 500 m to the Sirat Expressway
- 2.3 km to MRT Phetchaburi, with entrances on both Asok Montri Road and Petchaburi Road
- 3.4 km to Thonglor-Ekkamai Road
- 3.9 km to the Airport Link Makkasan station, near the junction of Asok and Rama 9
- 4 km to Rot Fai Market Ratchada for late night shoppers
- 4.5 km to Central Plaza Grand Rama 9
- 5 km to Emporium & Emquartier Shopping Complex
- 22.5 km to Suvarnabhumi Airport

## COFFEE & CRUMBLE EATERY

In a unique and funky setting, the inspiration for COFFEE & CRUMBLE EATERY comes from Bangkok's tourists, who come from all over the globe. We mix and match iconic Southeast Asian street food with European deli delicacies. The easy going vibe and familiar flavours encourage patrons to linger in the restaurant for yet another nibble. Opening Hours: 6.00 am – 11.00 pm



**MAITRIA HOTEL RAMA 9 BANGKOK**  
 - A CHATRIUM COLLECTION  
 908 Rimklong Samsen Road, Bangkok,  
 Huay Kwang, Bangkok 10310, Thailand  
 T +66 (0) 2203 1111 F +66 (0) 2203 1328  
 E info.mhrb@chatrium.com  
 www.maitriahotels.com