

## ALTERNATIVE QUARANTINE (AQ)

MAITRIA MODE SUKHUMVIT 15 BANGKOK – A CHATRIUM COLLECTION  
PARTNERS WITH PIYAVATE HOSPITAL

Maitria Mode Sukhumvit 15 Bangkok is a premier Alternative Quarantine (AQ) hotel that provides a total package with our healthcare partner Piyavate Hospital. By staying with us, you can be assured you will complete your AQ in comfort and safety.



Room Category	Size (SQM.)	7 days 2 swabs	10 days 2 swabs	
Deluxe Room	32	THB 25,000 net	THB 32,000 net	per person/room
Grand Room	32	THB 27,000 net	THB 34,000 net	per person/room
Premiere Corner Room	40	THB 30,000 net	THB 38,000 net	per person/room
Family Room	64	THB 48,000 net	THB 62,000 net	per 2 persons/room
Extra Person Charge		THB 22,000 net	THB 28,000 net	

#### Remarks

- Guests who have a vaccination certificate must complete a 7-day quarantine. (8 nights, 9 days).
- Guests who do not have a vaccination certificate must complete a 10-day quarantine. (11 nights, 12 days).

#### Maitria Mode Sukhumvit 15 Services and Benefits

- 3 complimentary meals per day with selective AQ menus
- Complimentary Wi-Fi internet access in room
- Complimentary drinking water
- In-room coffee & tea making facilities
- Set of eco-friendly amenities in room
- 24-hour nurse on duty to administer twice daily temperature checks and conduct health evaluation
- Cleaning service on day 4
- Refreshment area at rooftop garden access after day 4 with negative test results.

#### Piyavate Hospital Services and Benefits

- One-way airport pick up to hotel (BKK/DMK)
- Guest will be tested for RT-PCR 2 times: First time will be upon arrival at hospital designated area and the second time will be undergone at Hotel.
- 24-hour video consult service for COVID-19 concerns
- Hospital Welcome Kits

#### 7-day quarantine:

Guests can check-out on day 8 if their flight landed in Bangkok between 00.01-18.00 hrs. but must check-out on day 9 if their flight landed in Bangkok between 18.01 – 00.00 hrs.

#### 10-day quarantine:

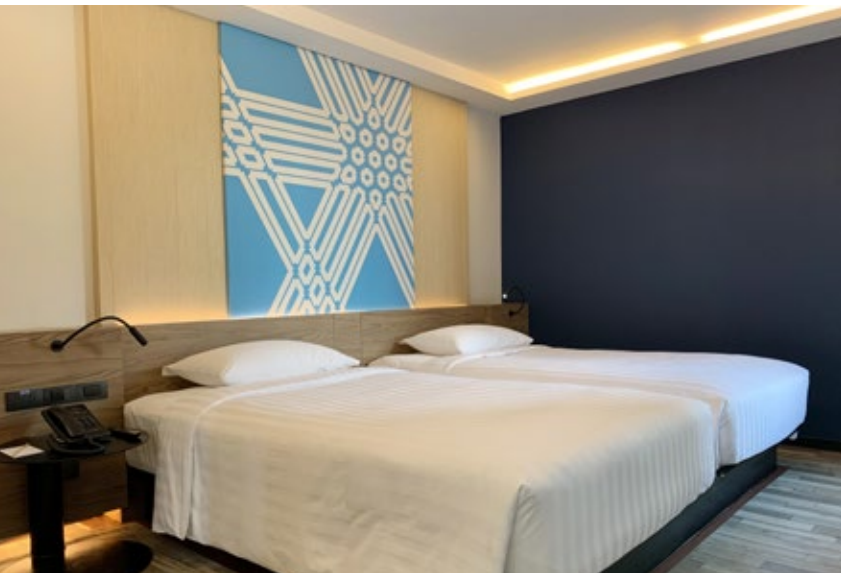
Guests can check-out on day 11 if their flight landed in Bangkok between 00.01-18.00 hrs. but must check-out on day 12 if their flight landed in Bangkok between 18.01 – 00.00 hrs.

#### Other Services (optional with extra charge)

- Laundry service package - 20 pieces at THB 1,177 / 30 pieces at THB 1,766 / 40 pieces at THB 2,119 (excludes dry cleaning)

#### Terms of Payment

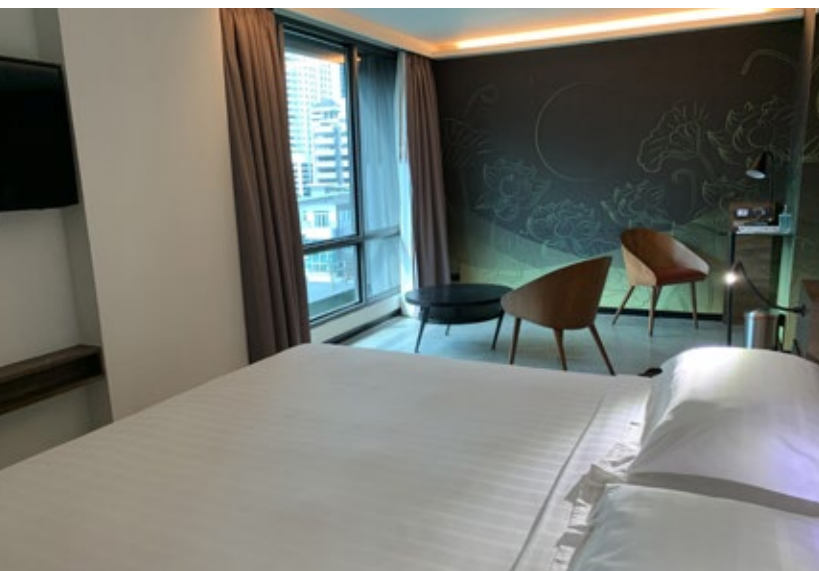
- Full payment in advance before arrival Cancellation and No-Show Terms & Conditions
- Cancellation is permitted up to 14 days prior to arrival
- Cancellation charge 50% from total amount will be applied for late cancellation less than 14 days prior to arrival
- A cancellation charge of 100% of the total amount will be applied for late cancellations less than 7 days prior to arrival
- If a guest tests positive for COVID-19 during their stay at the hotel, the full amount charged will not be refunded



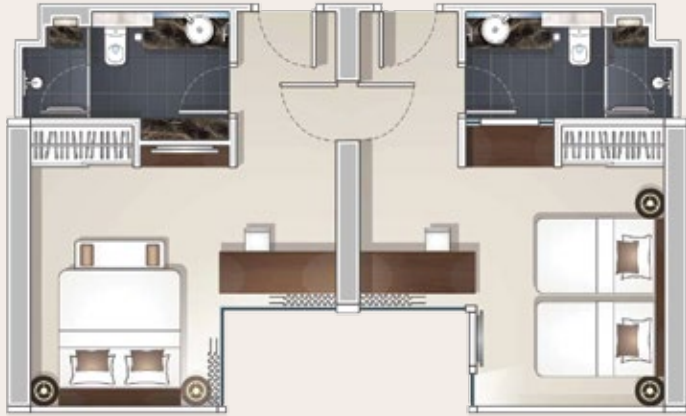
DELUXE ROOM **32 Sqm.**



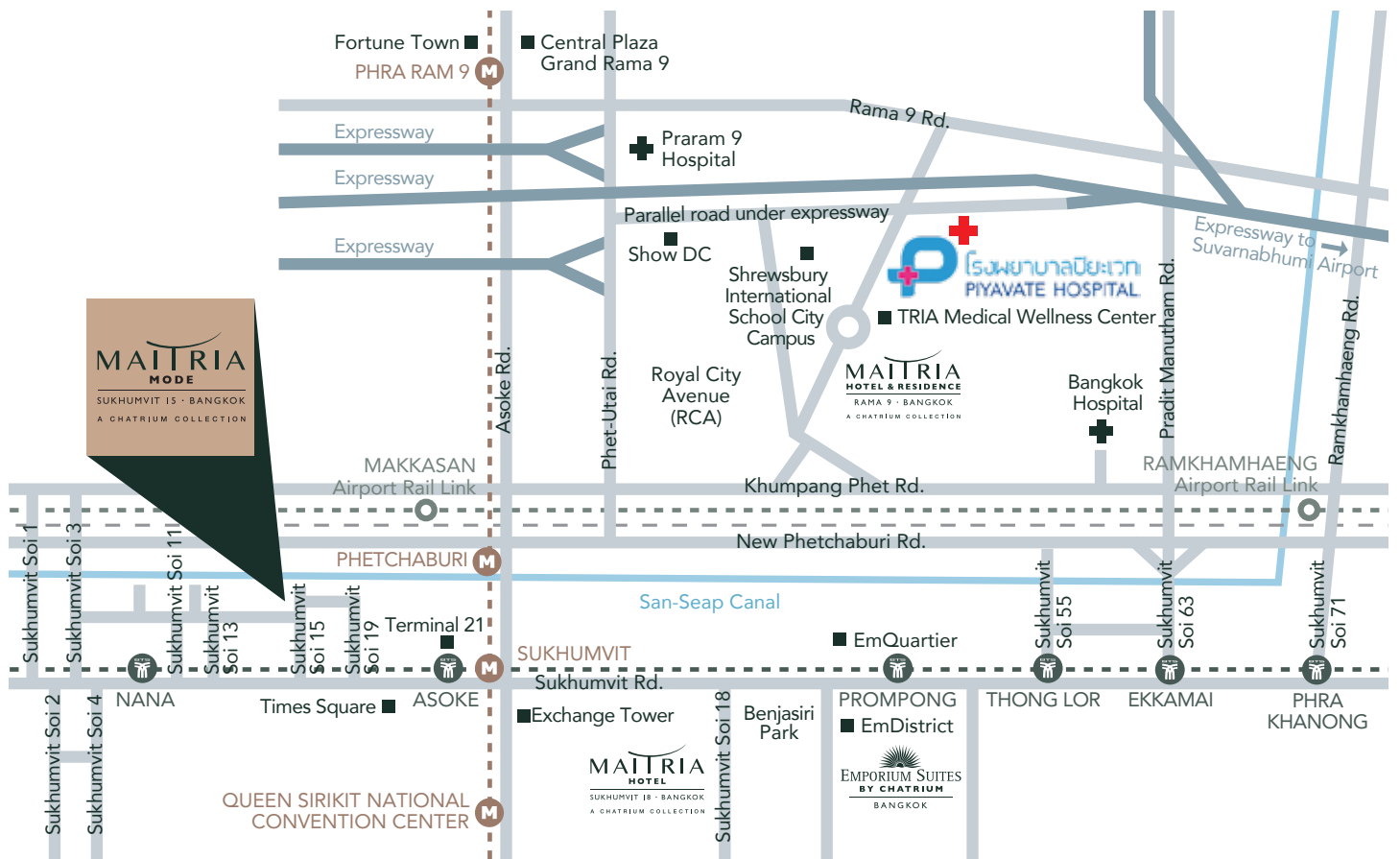
GRAND ROOM **32 Sqm.**



PREMIERE CORNER ROOM **40 Sqm.**



FAMILY ROOM **64 Sqm.**



**For more information contact:** Reservation Officer  
 Maitria Mode Sukhumvit 15 Bangkok - A Chatrium Collection  
 81 Sukhumvit Soi 15, Sukhumvit Road, Klongtoey-Nua, Wattana,  
 Bangkok 10110, Thailand  
 T +66 (0) 2651 3355 E info.mmsb@chatrium.com

MAITRIAHOTELS.COM

